

INFORMATIONAL REPORT

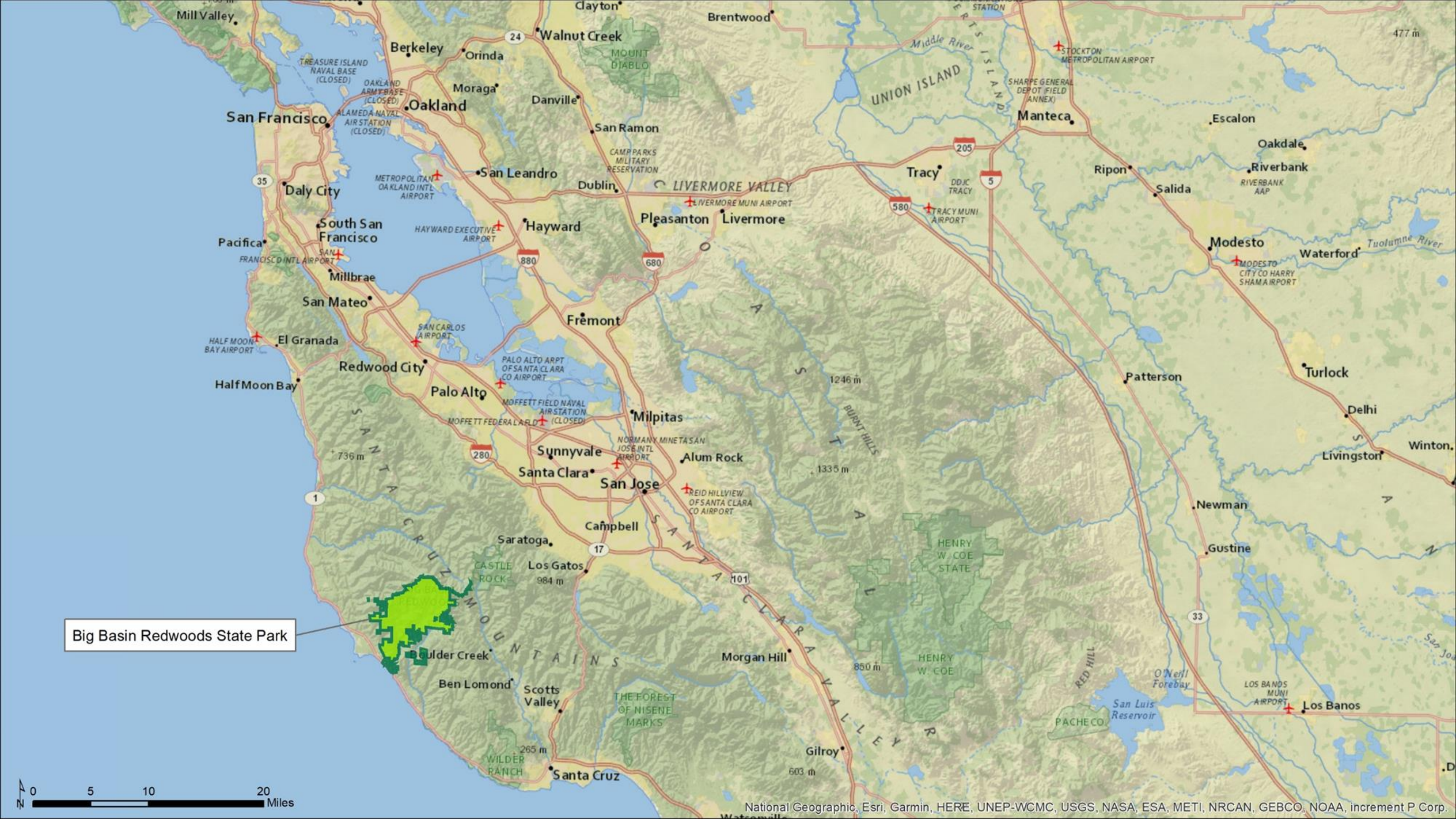
**REIMAGINING BIG BASIN VISION +
CORNERSTONE DOCUMENT**



STATE PARKS AND RECREATION COMMISSION MEETING

3/7/2024





Big Basin Redwoods State Park





Big Basin Inn, circa 1930s



Dance Floor, circa 1930s

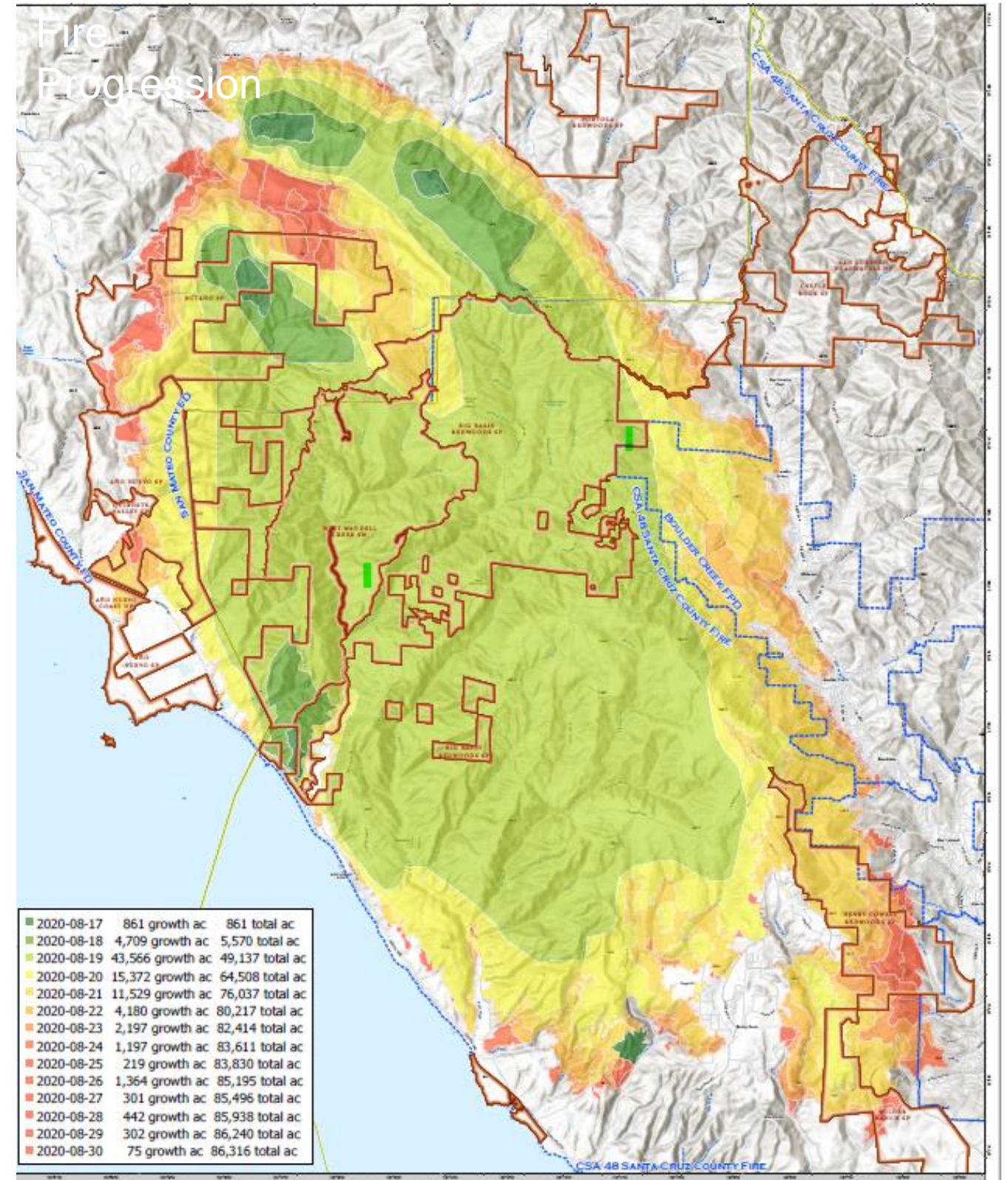


Pergola and Cabins, circa 1930s



Swimming Pool, circa 1940s

CZU FIRE





*Former Museum/Store Building
Summer 2020*

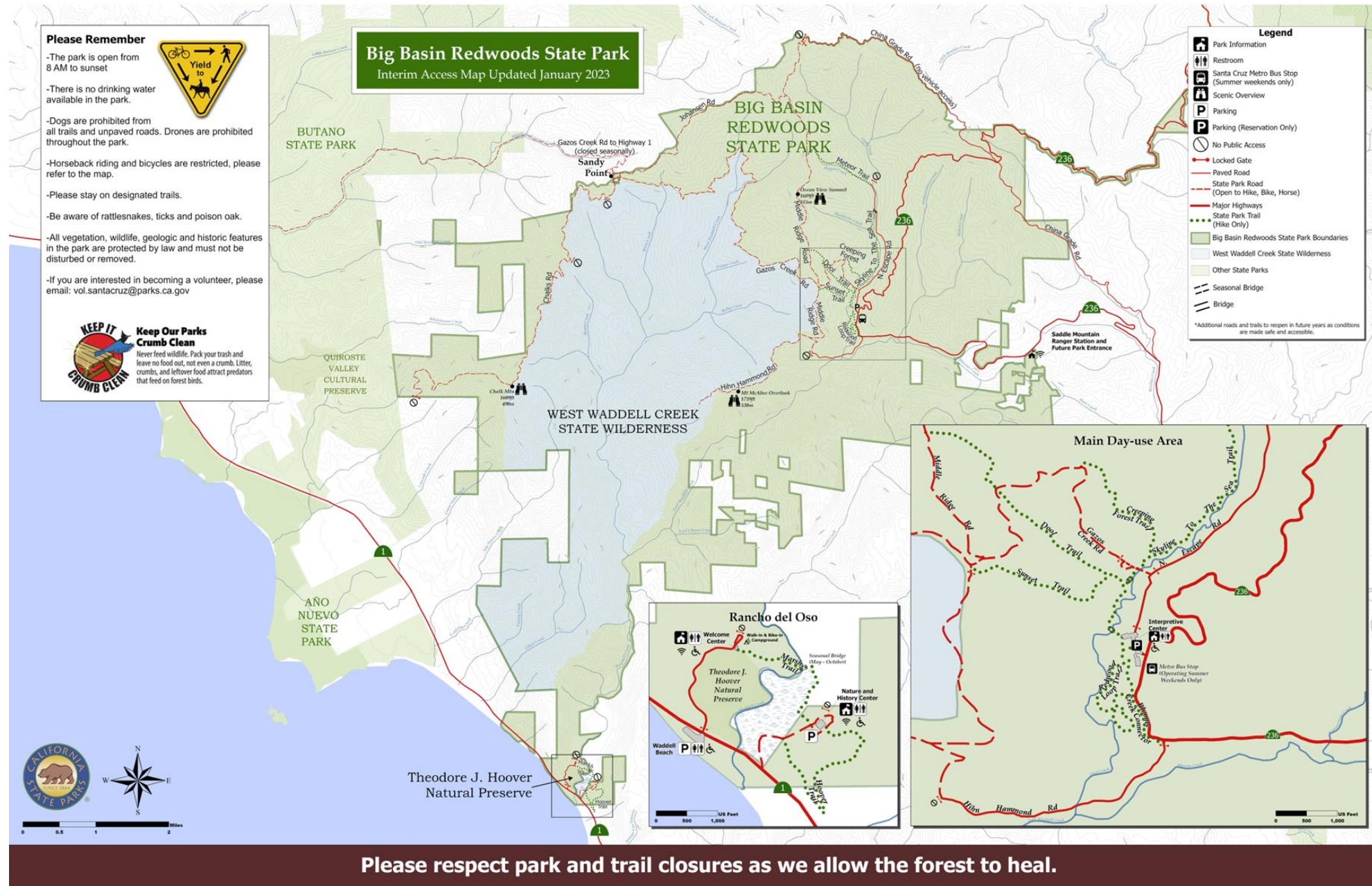


*Former Museum/Store Building
Spring 2023*



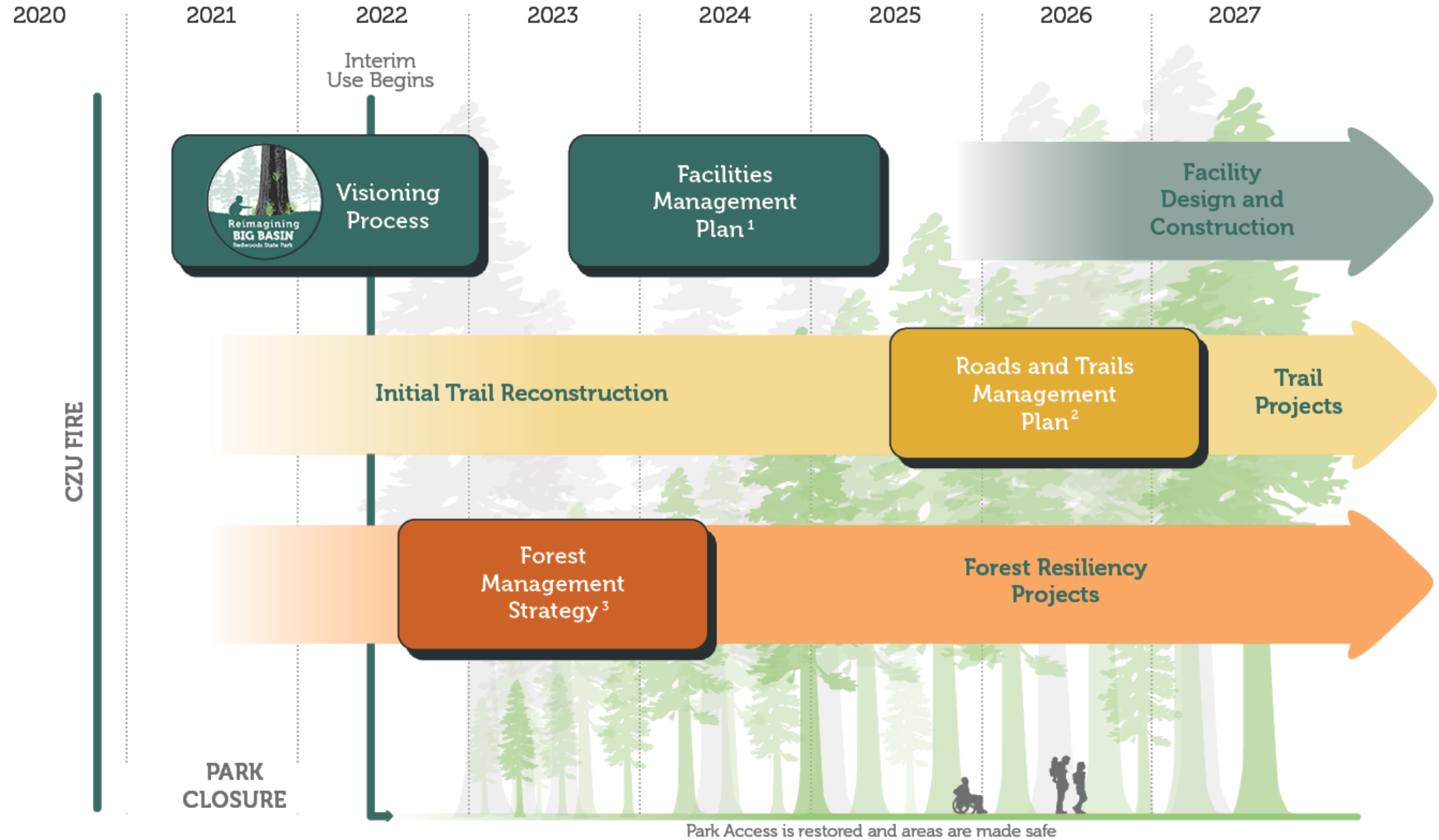
Temporary Visitor Center, Summer 2023
Photo from Latino Outdoors

PARK STATUS AND PUBLIC ACCESS



- » Day-use parking reservation system
- » Temporary visitor center, restroom, entry kiosk
- » 5 miles of trails, 26 miles of fire roads open
- » Rancho del Oso Nature Center, renovated Welcome Center, interim Walk-In Campground

Big Basin Planning Post-CZU Fire



- ① Park Facilities include Campgrounds, Structures, Welcome Areas, Visitor Centers Shuttle, Utilities, Operations and Maintenance Facilities, Ceremonial Space
- ② Trails include Park Trails, Fire Roads, Trail Camps, Trailheads
- ③ Forest Management includes Prescribed Fire, Hazardous Tree Work, Fuel Reduction, Forest Resiliency Projects

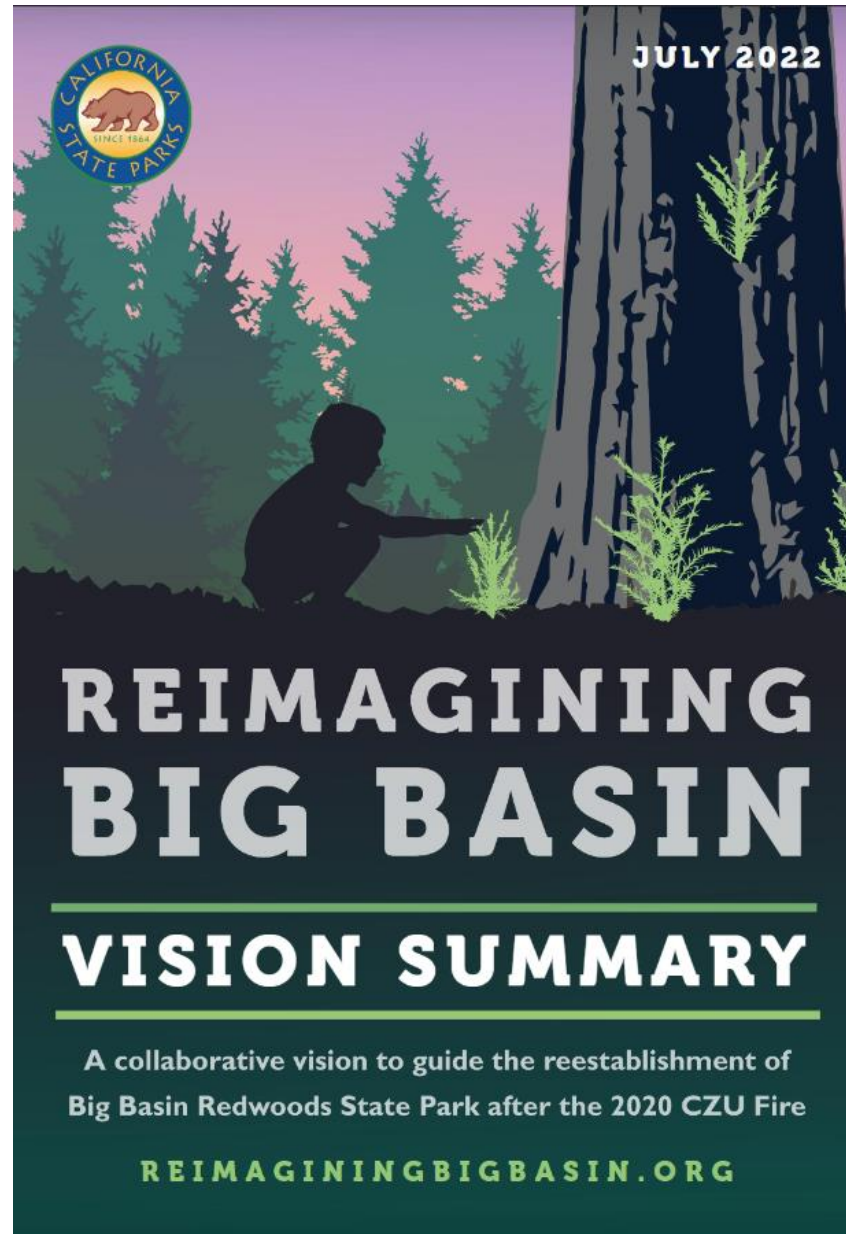


CORNERSTONE DOCUMENT

Big Basin Redwoods



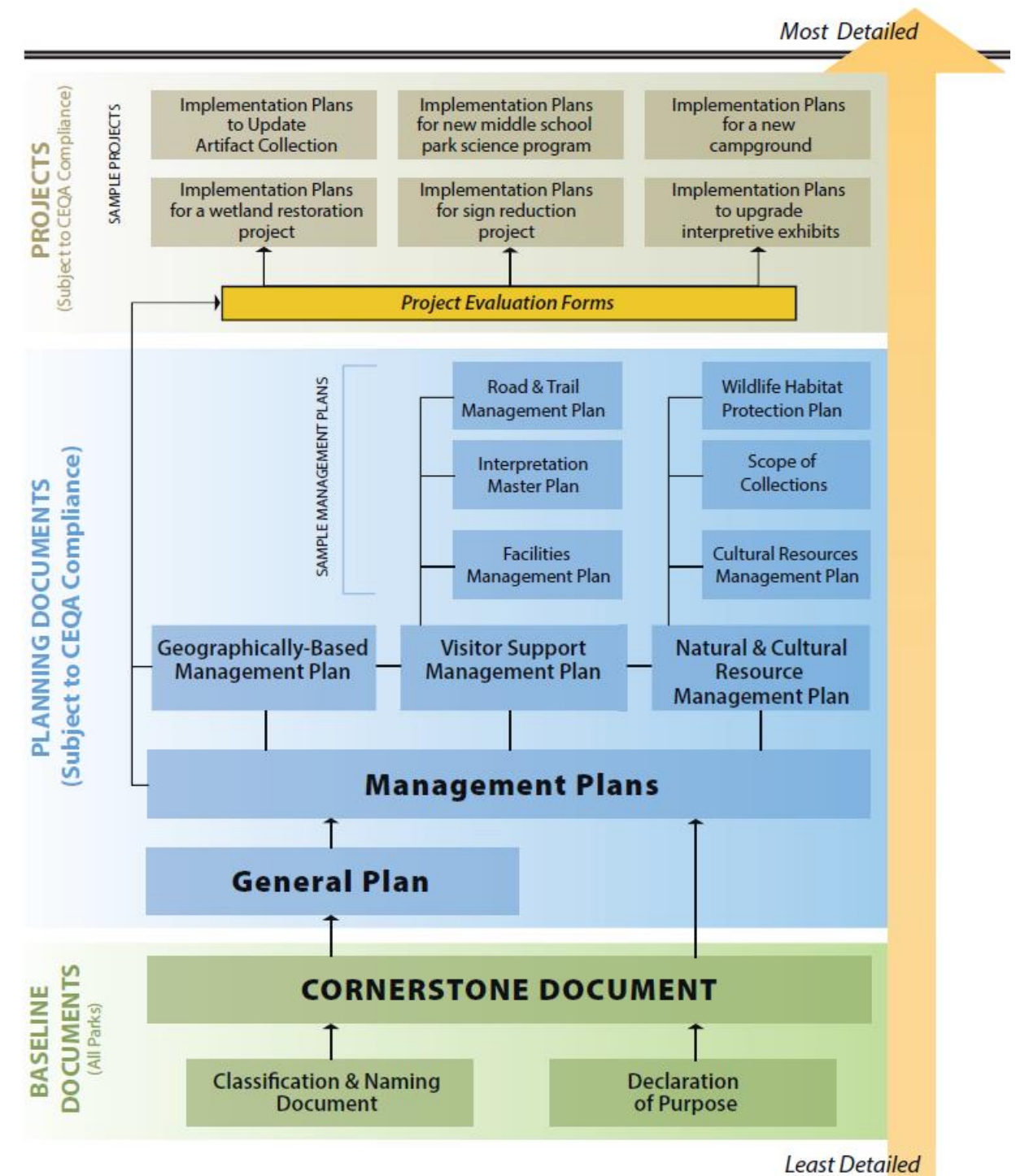
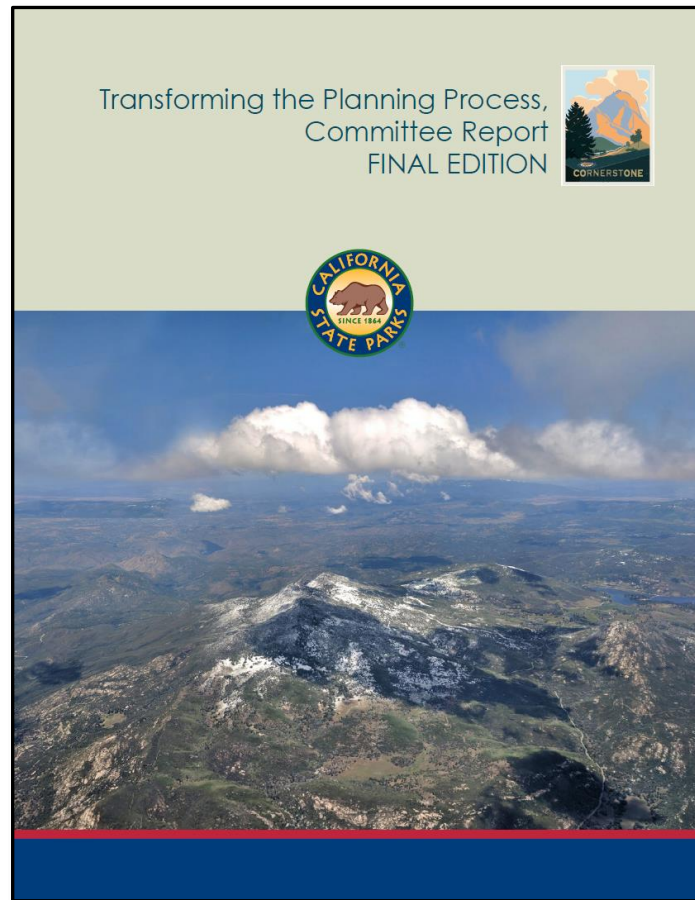
REIMAGINING BIG BASIN VISION



Our shared vision for the reimagined Big Basin Redwoods State Park includes:

- 1** *Resilient Natural Landscapes Guided by Ecological Processes*
- 2** *Diverse Experiences by Future Californians*
- 3** *Equitable Access and Meaningful Visitor Experiences for All*
- 4** *Aesthetic Facilities with Reverent Design*

STATE PARKS Cornerstone Documents

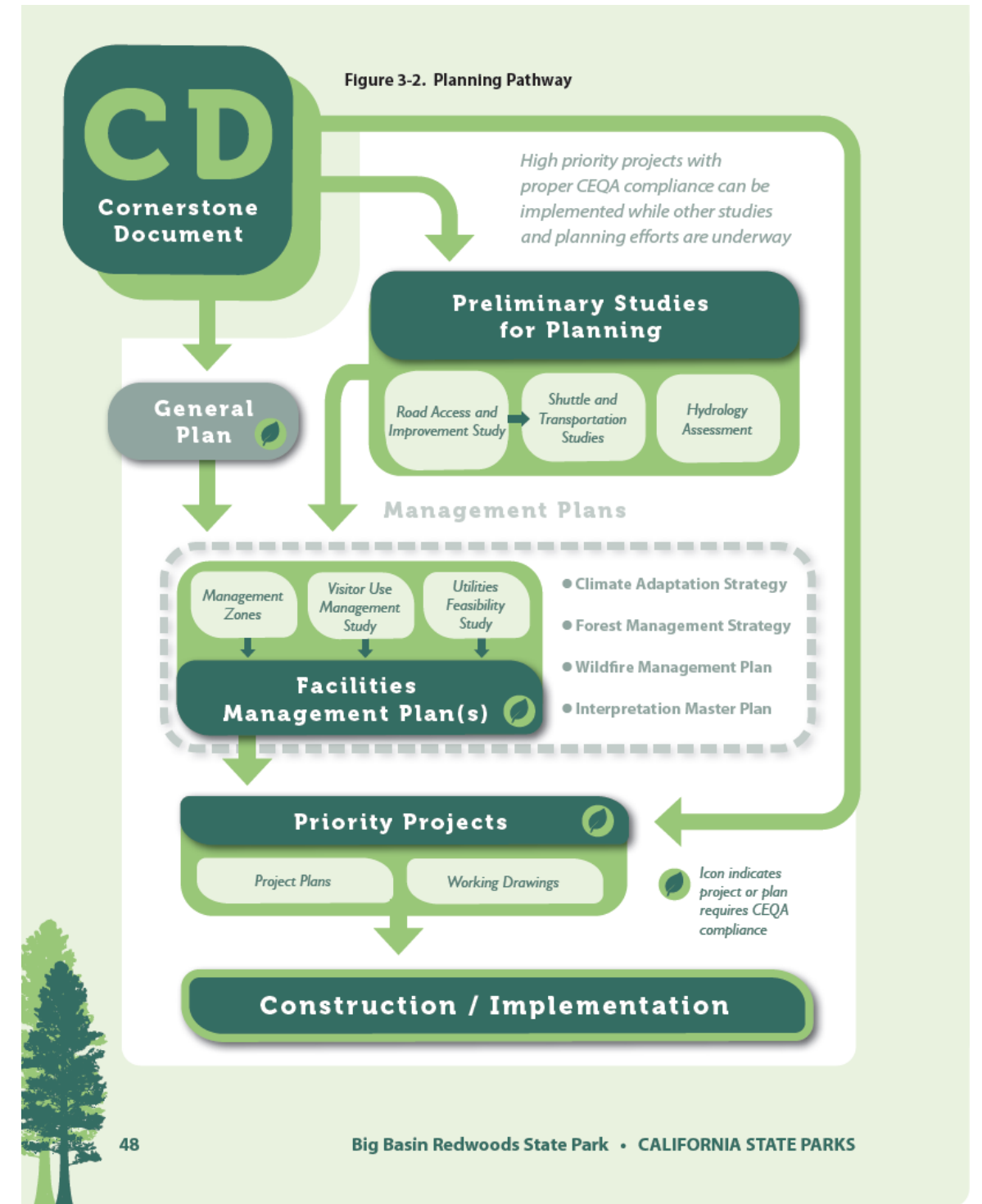
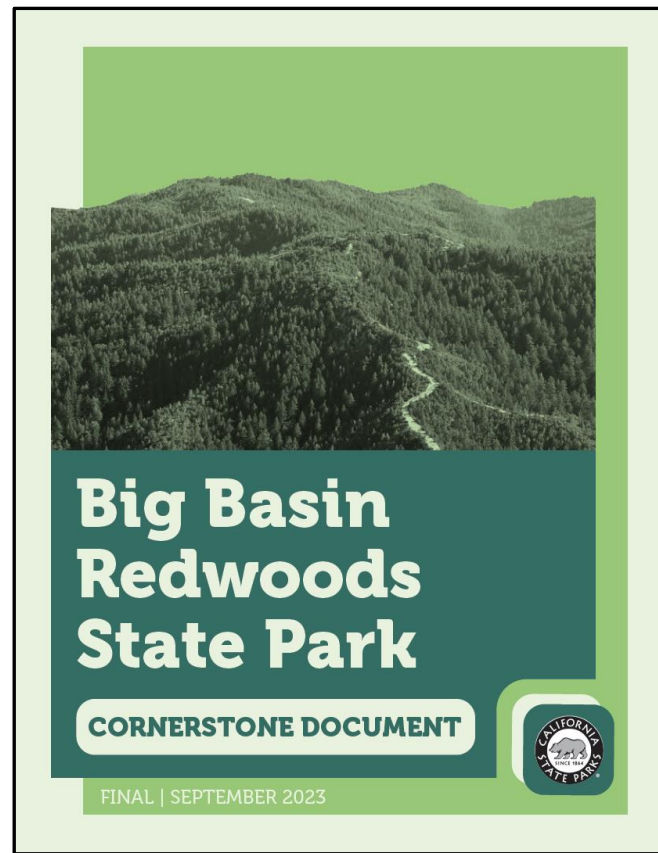


CORNERSTONE DOCUMENT

Big Basin Redwoods



Big Basin Planning Post-CZU Fire



Cornerstone Contents

- » Introduction
- » Part 1 – Park Summary
- » Part 2 – Core Components
- » Part 3 – Dynamic Components
- » Map Atlas



1 - Park Summary

- » Revised Declaration of Purpose
- » Vision Statement (from Reimagining Vision Summary)
- » Guiding Principles
- » Sense of Place



Former Administration Building
Spring 2022



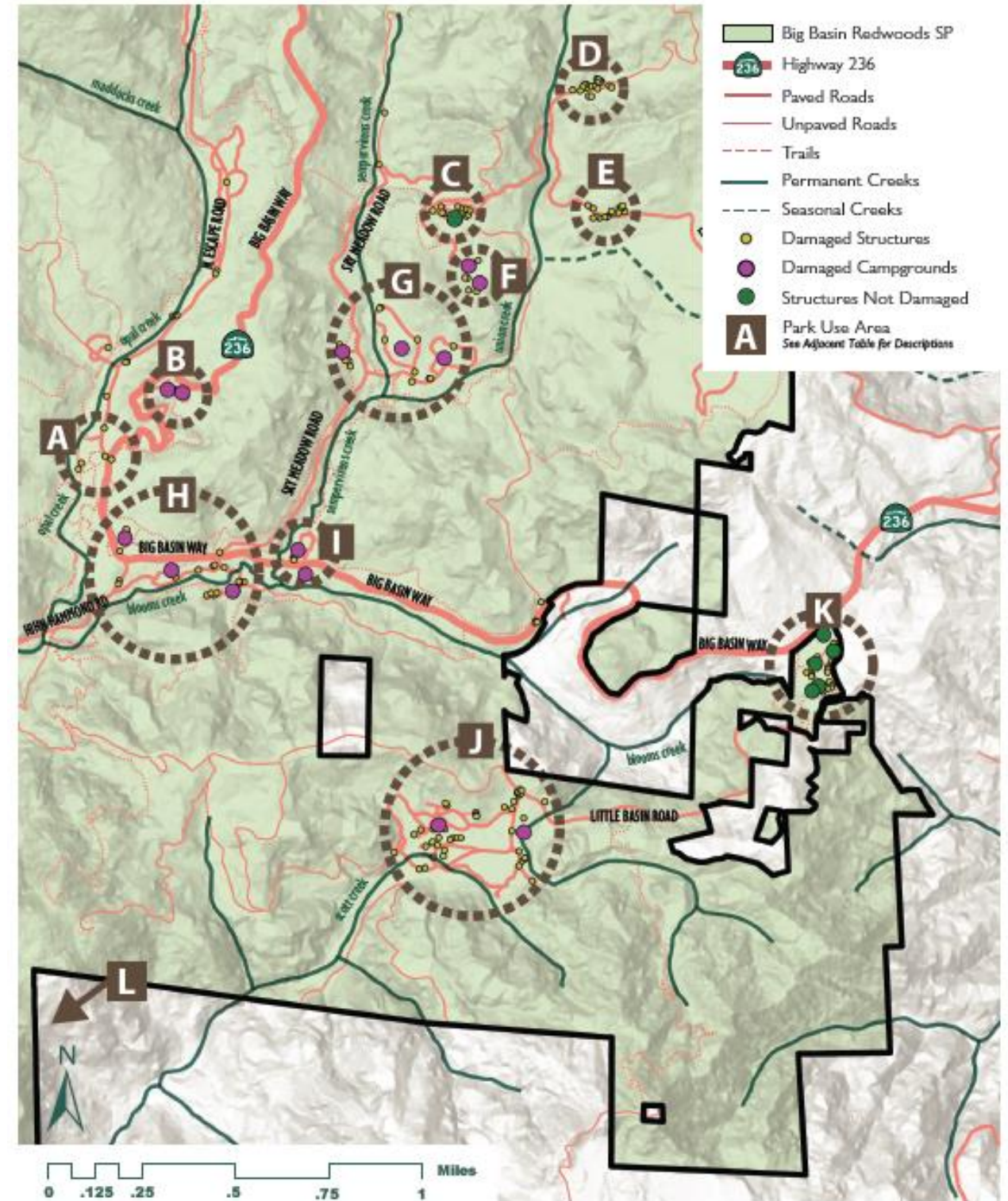
2 – Core Components

- » Natural, Aesthetic, Cultural Resources
- » Proposed Interpretive Themes
- » Developed Facilities and Loss to CZU Fire



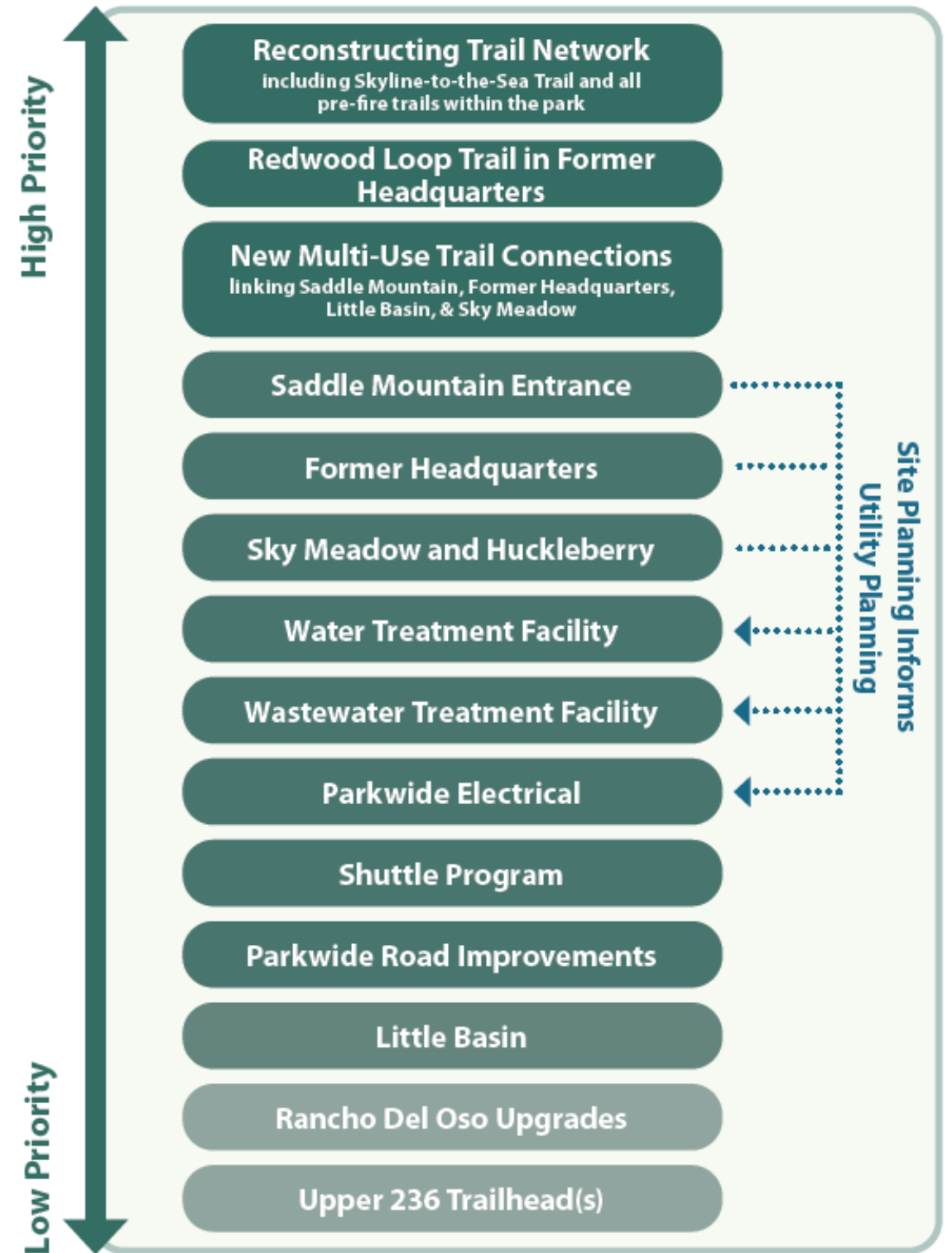
Redwood Loop Trail, August 2022

Figure 2-1. Big Basin Facilities Lost to Fire



3 – Dynamic Components

- » Stakeholders and Community Feedback
- » Challenges of Climate Change
- » Issue Identification
- » Planning Needs



NEXT STEPS

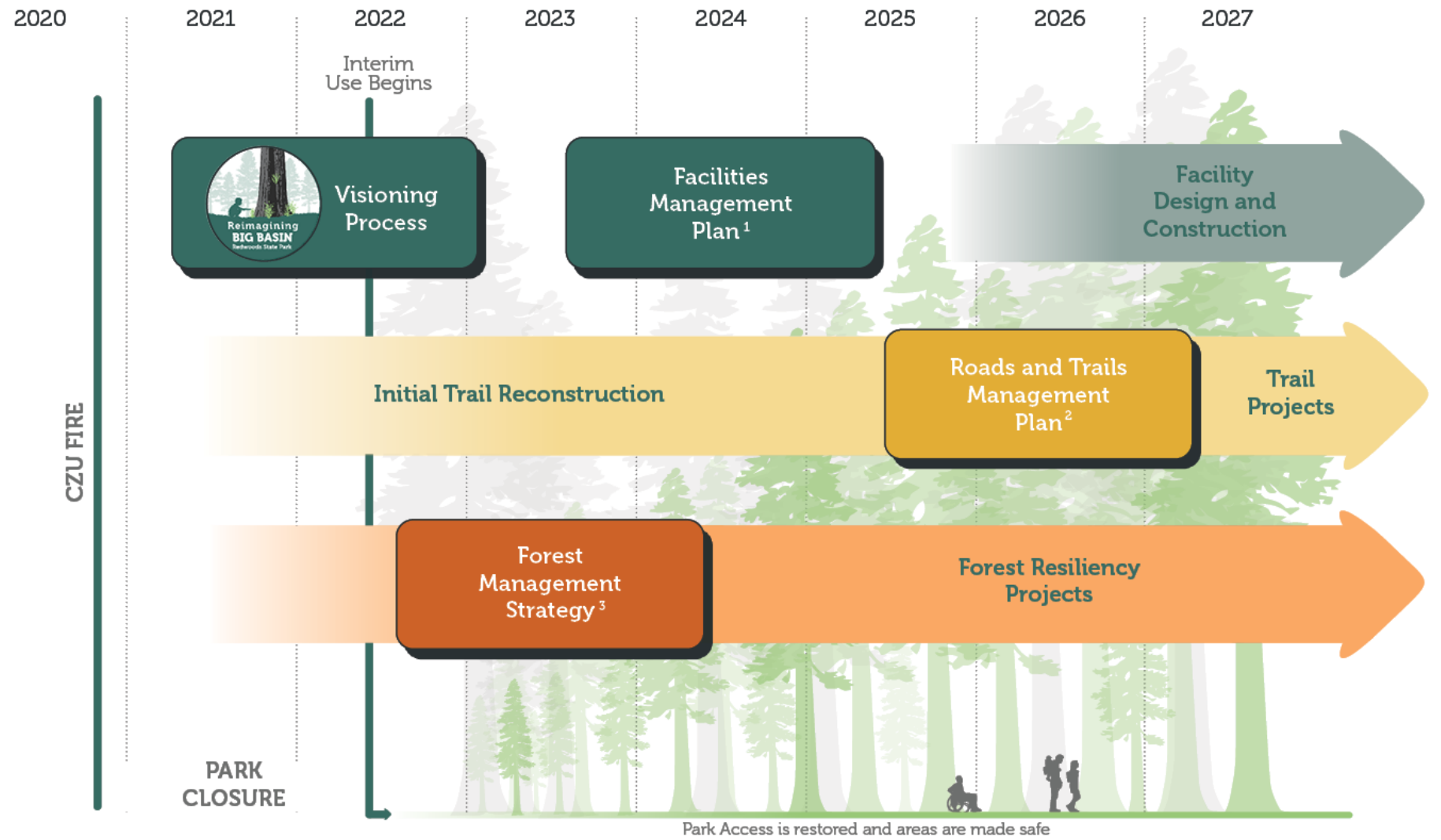
Big Basin Planning



State Parks District Team Planning Session
February 2024



Facilities Management Plan Public Open House
February 2024



- 1 Park Facilities include Campgrounds, Structures, Welcome Areas, Visitor Centers Shuttle, Utilities, Operations and Maintenance Facilities, Ceremonial Space
- 2 Trails include Park Trails, Fire Roads, Trail Camps, Trailheads
- 3 Forest Management includes Prescribed Fire, Hazardous Tree Work, Fuel Reduction, Forest Resiliency Projects



CORNERSTONE DOCUMENT

Big Basin Redwoods

